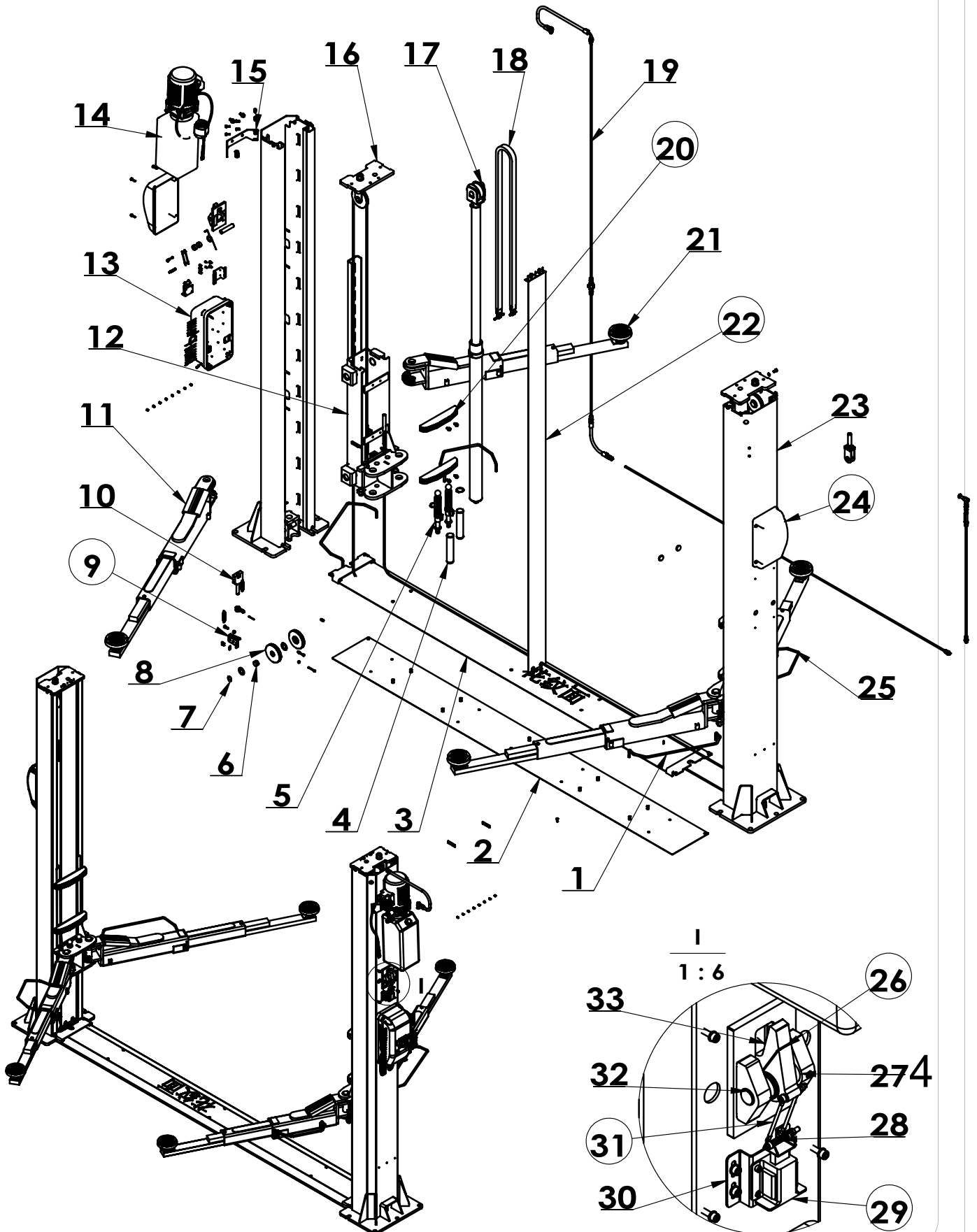


4T双柱举升机/ITA-BT240

所有画圈编号的零件为推荐备件 (易损件)
 All circled position numbers are recommended spare parts

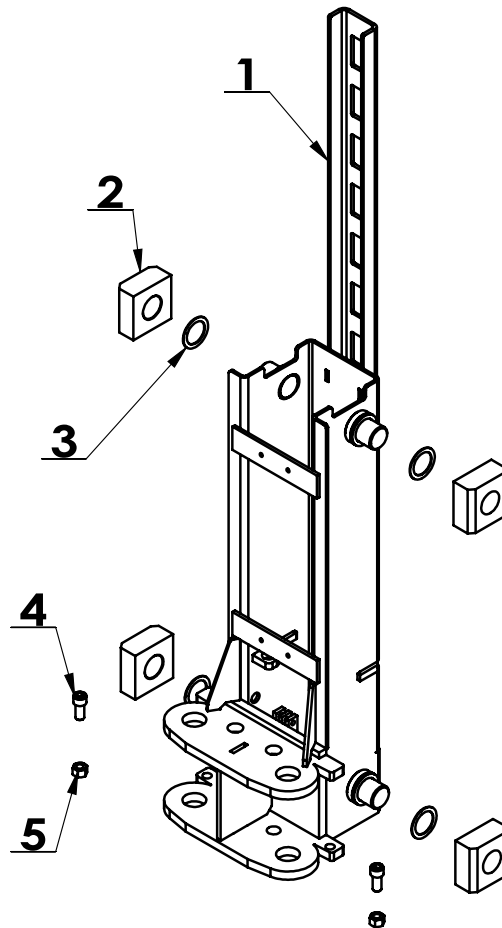


4T双柱举升机/AITA-BT240

Pos.	Cod num.	Description	Qt
1	J101-1000018	Foot front protection	2
2	J101-1020000	Floor plate	1
3	J101-1030000	Cover plate	1
4	J101-1000002	Pin - arm	4
5	J101-1110000	Pin - lock	4
6	GB12613-25X28X15	Self-lubricating shaft sleeve	4
7	GB894.1-25	Elastic ring	4
8	J103-1000001	3.5-pulley	4
9	J101-1150000	Spring chain	2
10	J101-1090000	Chain holder	2
11	J101-1060000	Rubber - arm	2
12	J103-1040000	Carriage	2
13	J101-1120000	Electro box	1
14	J101-1190000	380V3.5TPump assembly	1
15	J101-1000008	Pump support	1
16	J101-1080000	Top tape	2
17	J101-1070000	Cylinder	2
18	J101-1000001	Chain	2
19	J101-1140000	Pipe	1
20	J101-1000003	Rubber carriage	4
21	J101-1050000	Rubber pad	2
22	J101-1100000	Curtain	2
23	J103-1010000	Column	2
24	J101-1000010	Safety cover	2
25	J101-1000019	Foot rear protection	2
26	J101-1000024	Spring look	2
27	J101-1000016	Screw	4
28	J101-1000013	Spring	2
29	J101-1000012	Electromagnet	2
30	J101-1000011	Electromagnet support	2
31	J101-1003000	pull rod	4
32	J101-1000017	Safety arpoon	2
33	J101-1000015	Pin arpoon	2

4T滑车组件

Pos.	Cod num.	Description	Qt
1	J103-1041000	Carriage	1
2	J101-1040001	Slide pad	4
3	J101-1040002	Spacer	4
4	GB70. 1-M14×30	Screw	2
5	GB41-M14	Nut	2

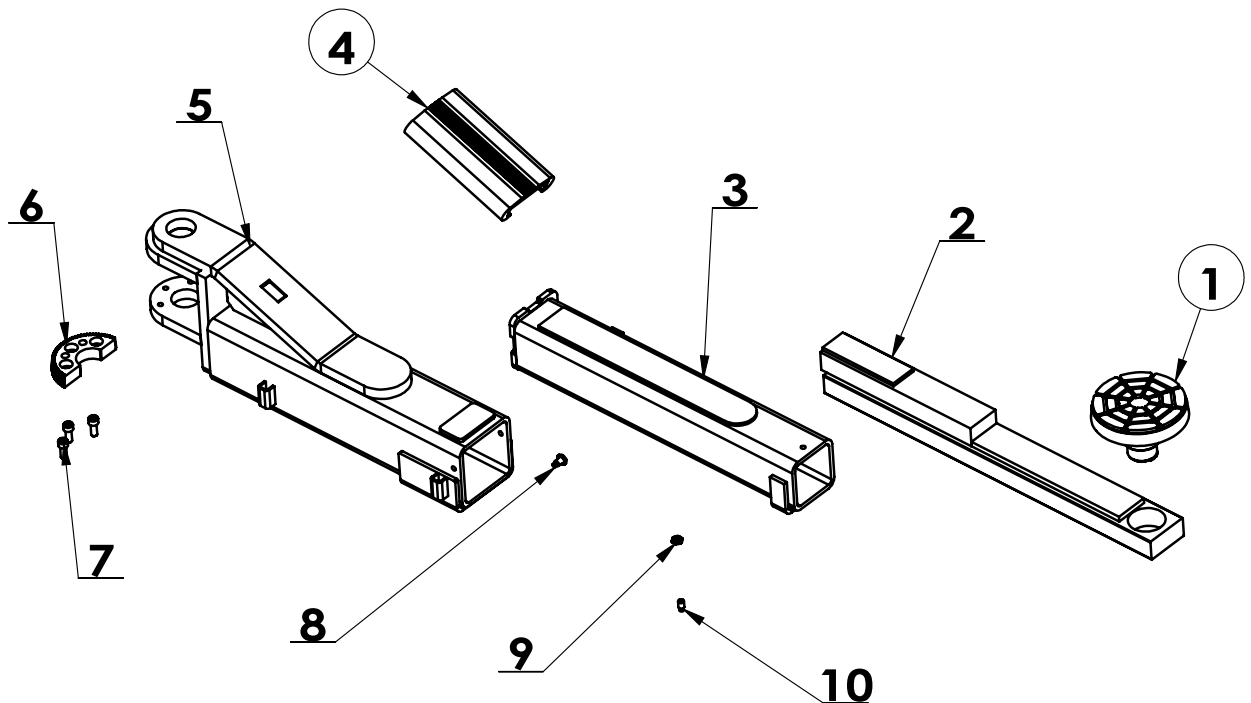


原图号：CCG4D0580-01004

支臂组件一

所有画圈编号的零件为推荐备件 (易损件)
All circled position numbers are recommended spare parts

Pos.	Cod num.	Description	Qt
1	J201-1340000	Lifting plate	1
2	J101-1053000	Last stage arm	1
3	J101-1052000	Second stage arm	1
4	J101-1050002	Rubber arm	1
5	J101-1051000	First stage arm	1
6	J101-1050001	Locking sector	1
7	GB70. 1-M8×20	Screw	3
8	GB79-M8×20	Screw	1
9	GB6172. 1-M8	Nut	2
10	GB79-M8×16	Screw	1

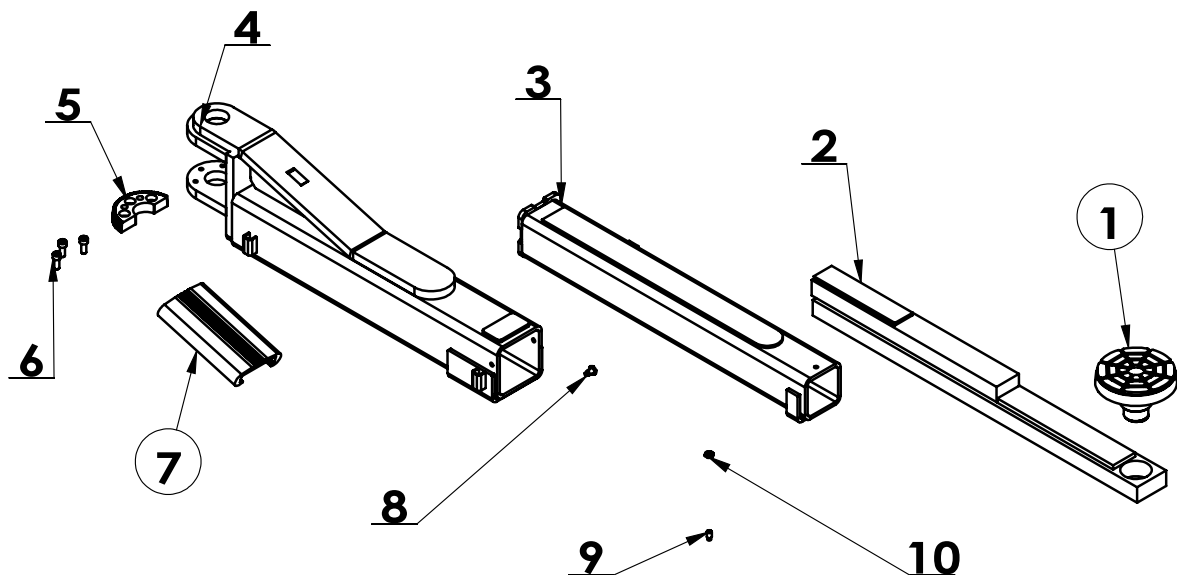


原图号 : 5-106946

支臂组件二

所有画圈编号的零件为推荐备件（易损件）
All circled position numbers are recommended spare parts

Pos.	Cod num.	Description	Qt
1	J201-1340000	Lifting plate	1
2	J101-1063000	Last stage arm	1
3	J101-1062000	Second stage arm	1
4	J101-1061000	First stage arm	1
5	J101-1050001	Locking sector	1
6	GB70.1-M8×20	Screw	3
7	J101-1050002	Rubber arm	1
8	GB79-M8×20	Screw	
9	GB79-M8×16	Screw	3
10	GB6172.1-M8	Nut	3

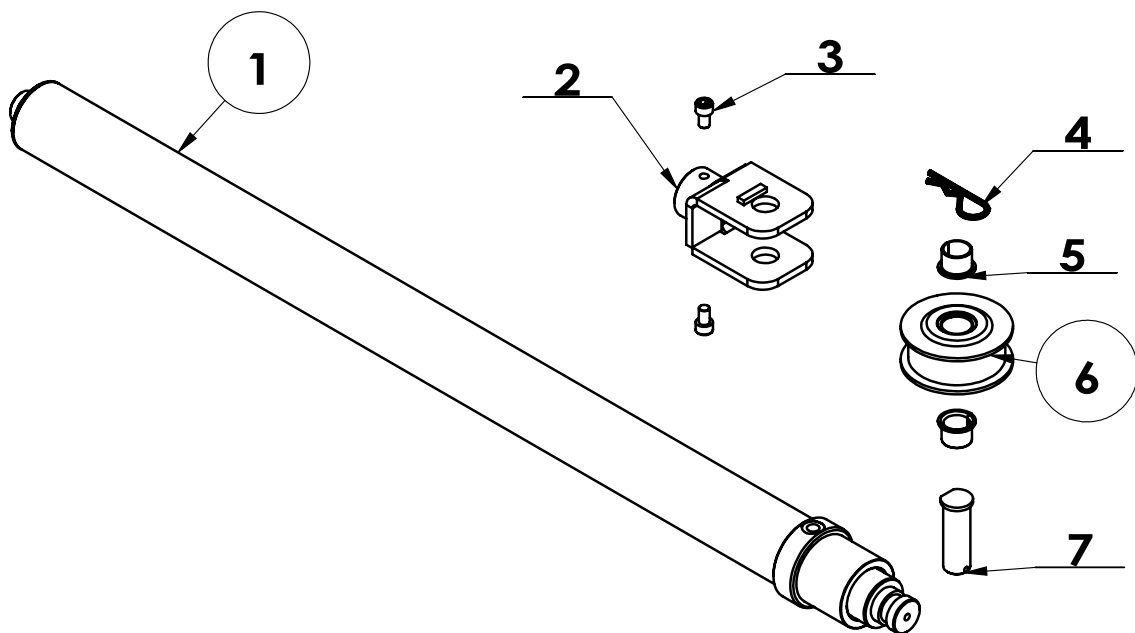


原图号：5-106948

油缸组件

所有画圈编号的零件为推荐备件 (易损件)
All circled position numbers are recommended spare parts

Pos.	Cod num.	Description	Qt
1	J101-1071000	Cylinder	1
2	J101-1072000	Fork	1
3	GB70. 1-M10×16	Screw	2
4	C-01-100000BJ	Fixing pin	1
5	J101-1070003	Self	2
6	J101-1070002	Pulley chain	1
7	J101-1070001	Sprocket shaft	1

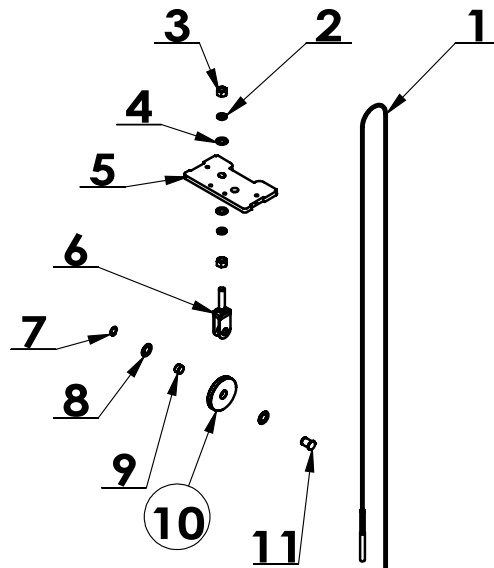


原图号 : 5-800006

同步轮组件

所有画圈编号的零件为推荐备件 (易损件)
All circled position numbers are recommended spare parts

Pos.	Cod num.	Description	Qt
1	J101-1080006	Steel cable	1
2	GB93-20	Elastic washer	
3	GB41-M20	Nut	2
4	GB95-20	Washer	2
5	J101-1080001	Top cover	1
6	J101-1081000	Fork	1
7	GB894. 1-25	Nut	1
8	J101-1080004	Washer	2
9	GB12613-25X28X15	Self lubricating	1
10	J101-1080002	Pulley	1
11	J101-1080003	Screw	1

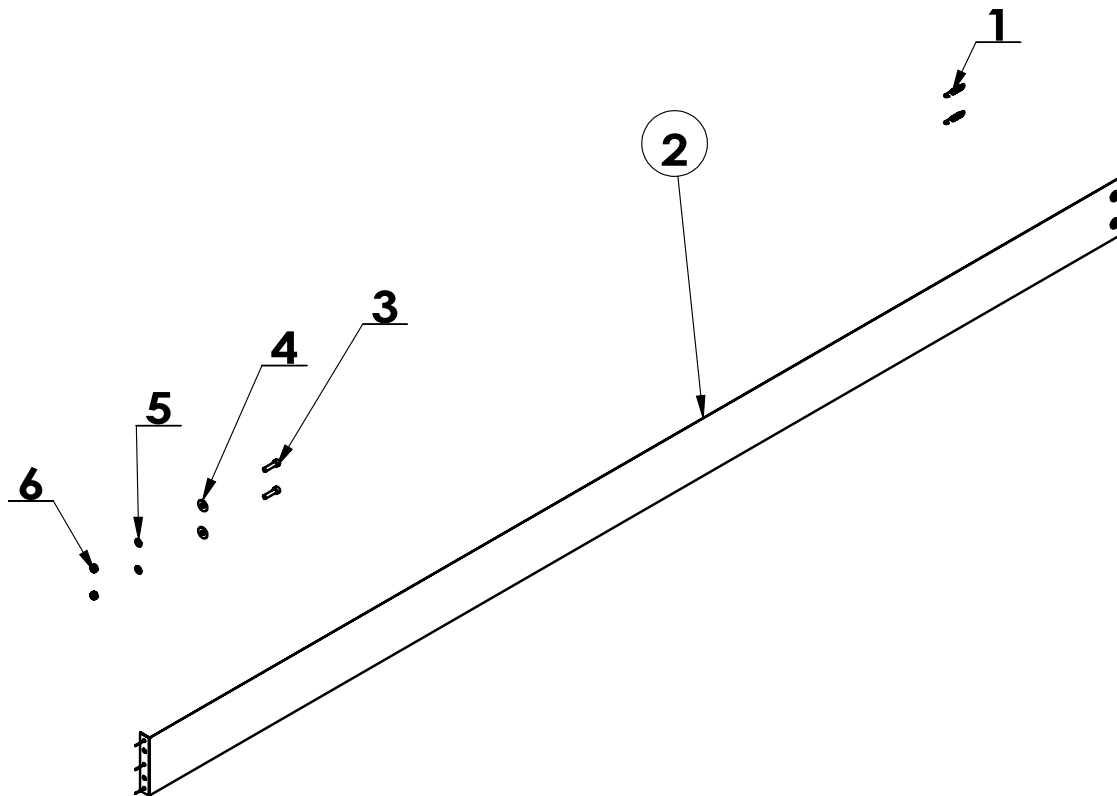


原图号 : CCG4D0580-0101

遮挡帘组件

所有画圈编号的零件为推荐备件（易损件）
All circled position numbers are recommended spare parts

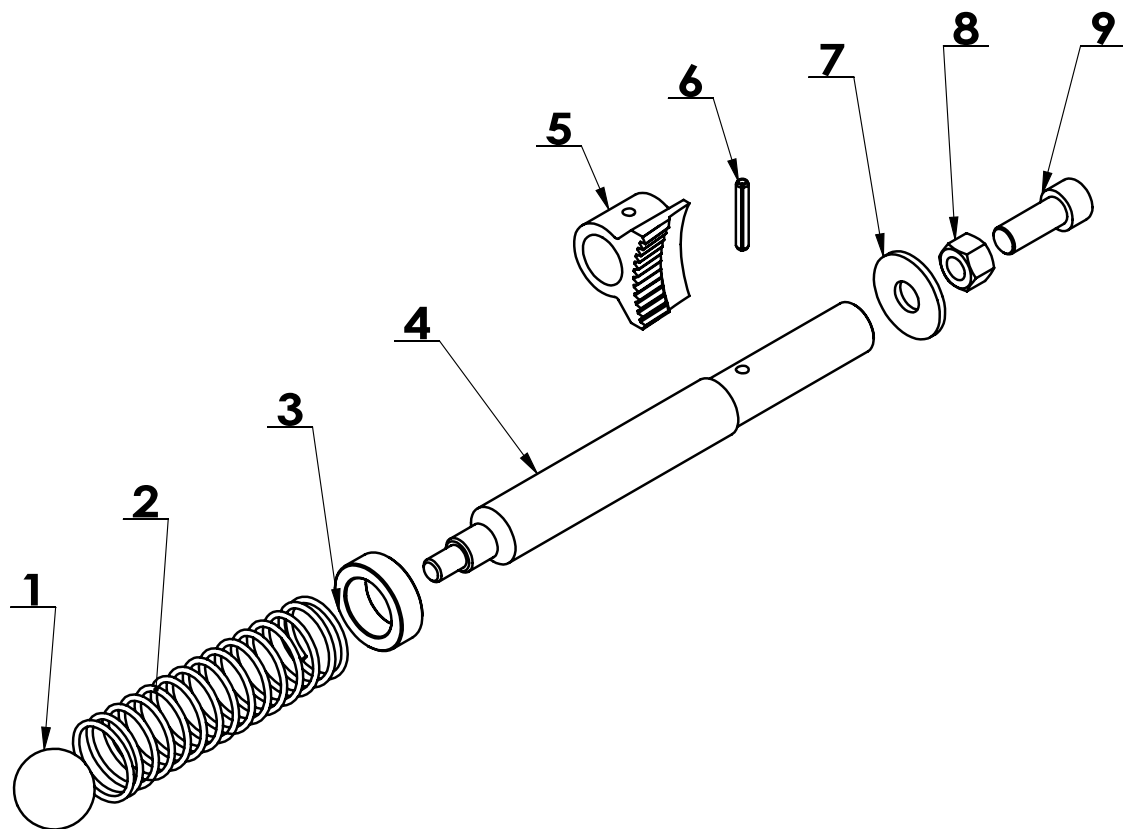
Pos.	Cod num.	Description	Qt
1	J101-1100003	Tension spring	2
2	J101-1101000	Curtain	1
3	GB70.1-M8×30	Screw	2
4	GB96.2-8	Large washer	2
5	GB95-8	Washer	2
6	GB41-M8	Nut	2



原图号：CCG4D0580-0184

锁轴组件

Pos.	Cod num.	Description	Qt
1	MH-12-1360011	Handle ball	1
2	J101-1110003	Compression spring	1
3	J101-1110004	Ferrule	1
4	J101-1110001	Pin lock	1
5	J101-1110002	Sector pin	1
6	GB879. 1-5×32	Fixing pin	1
7	GB96. 2-12	Washer	1
8	GB41-M12	Nut	1
9	GB70. 1-M12×45	Screw	1



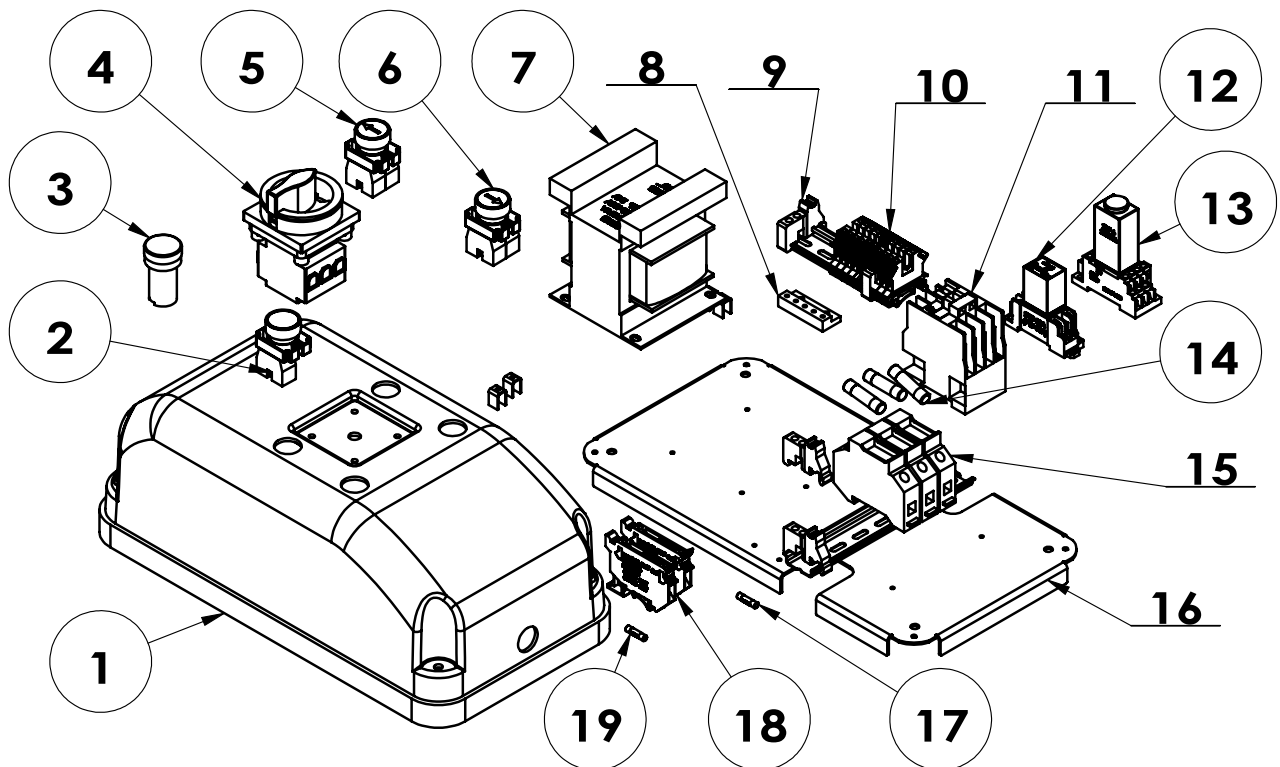
原图号：5-106934

主控箱

REVISION A-04

所有画圈编号的零件为推荐备件 (易损件)
All circled position numbers are recommended spare parts

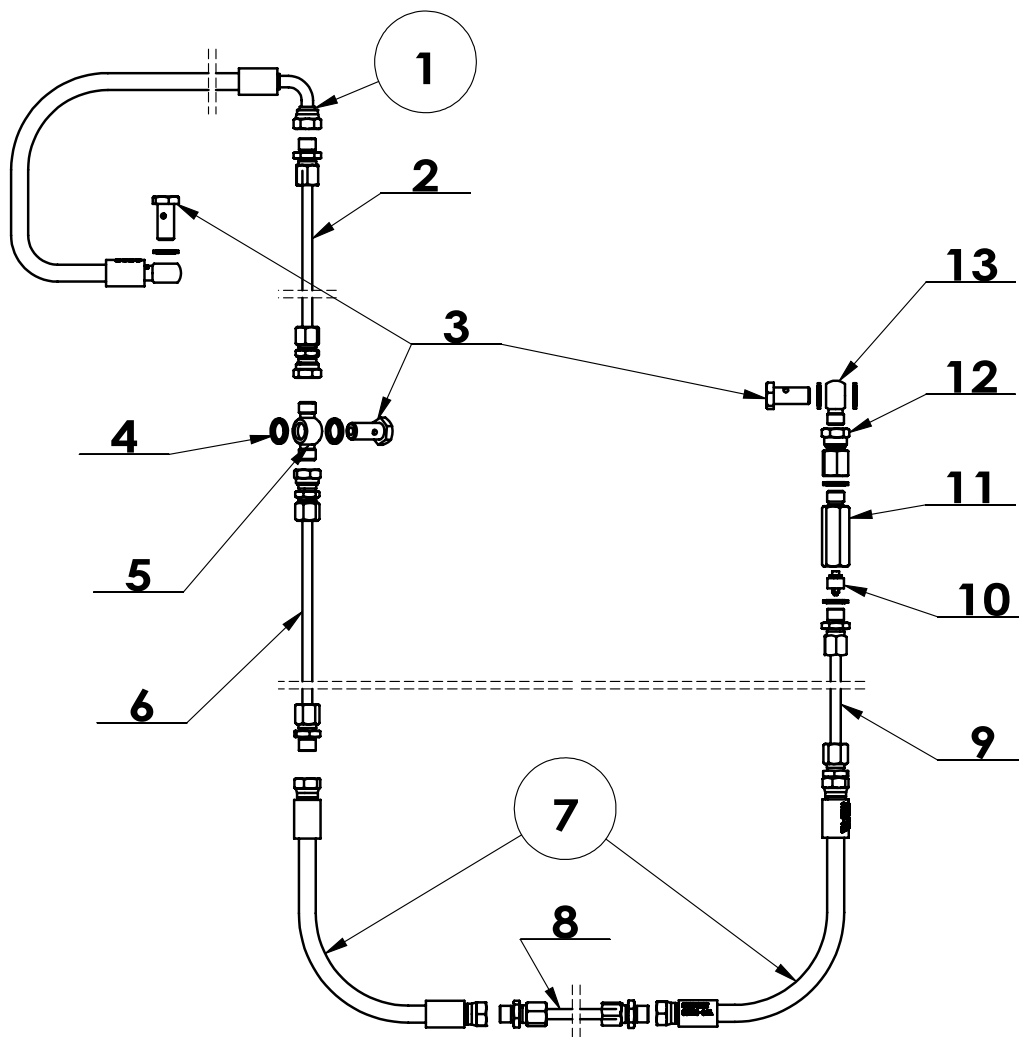
Pos.	Cod num.	Description	Qt
1	J101-1122001	Plastic cover	1
2	TC-E-270BA31	Button switch	1
3	TC-E-7202401	Power Indicator Lamp	1
4	TC-E-2401616	Switch	1
5	TC-E-2702343	Button switch	1
6	J101-1122M00	Button switch	1
7	TC-E-3940024	Transformer	1
8	TC-E-7400001	Earthing terminal	1
9	TC-E-5130000	Fixing clip	4
10	TC-E-5110025	Connection terminal	11
11	TC-E-4280124	AC contactor	1
12	TC-E-4400224	Intermediate relay	1
13	TC-E-43Z6324	Time relay	1
14	TC-E-7101512	Fuse	3
15	TC-E-7128323	Safety box	3
16	J101-1121001	Mounting plate	1
17	J101-1121007	10A fuse	1
18	TC-E-5110006	Safety terminal	2
19	J101-1121004	1A fuse	1



液压油管系统

所有画圈编号的零件为推荐备件 (易损件)
All circled position numbers are recommended spare parts

Pos.	Cod num.	Description	Qt
1	J101-1141000	Rubber tube	1
2	J101-1140100	Combination pipe	1
3	J101-1140005	Fitting	3
4	JB982-14	Washer	8
5	J101-1140004	Double eye fitting	1
6	J101-1140200	Combination pipe	1
7	J101-1145000	Rubber tube	2
8	J101-1140300	Combination pipe	1
9	J101-1140400	Combination pipe	1
10	J101-1143000	Parachute valve	1
11	J101-1140011	Extention	1
12	J101-1140500	Fitting	1
13	J101-1140008	Fitting - eye	1



微动开关组件

所有画圈编号的零件为推荐备件 (易损件)
 All circled position numbers are recommended spare parts

Pos.	Cod num.	Description	Qt
1	GB818-M4×30-H	Screw	2
2	J101-1151001	Switch support	1
3	J101-1151003	Electro switch	1
4	GB95-4	Washer	2
5	GB889.1-M4	Nut	2

